

Senior leadership team



Stephen Young
Chief Executive

Children’s Services



Melissa Caslake
Executive Director of Children’s Services.



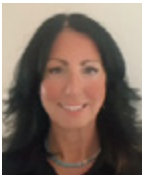
Rebecca Bibby
Director of Early Help and School Readiness. Deputy to the Executive Director of Children’s Services.



Cathy Starbuck
Director of Education and Inclusion.



Sayma Khan
Director of Children’s Social Care.



Deborah Blackburn
Director of Children’s Commissioning, Nursing and Wellbeing.

Place



John Searle
Executive Director of Place.



Stephanie Mullenger
Director of Property and Client Services.



Rupert Casey
Director of Environment and Neighbourhoods.



Jim Wensley
Director of Regeneration.



Shoaib Mohammad
Director of Infrastructure.



Matthew Ainsworth
Director of Skills, Work, and Inclusive Economy.



Darren Grice
Director of Culture.

Adult Social Care and Health Partnerships



Becky Wilkinson
Executive Director of Adult Social Care and Health Partnerships.



Elaina Quesada
Interim Director of Adult Social Services.



Gillian McLauchlan
Interim Director of Public Health and Wellbeing.



Judd Skelton
Director of Adult Commissioning.



Paul Walsh
Director of Adult Commissioning.



Dr May Moonan
Director of Healthcare Public Health (Deputy DPH).



Lee Calvert
Director of Adult Social Care (starts Spring 2026).



Vacant
Director of Health Protection and Commissioning (Deputy DPH).



Alan Caddick
Interim Director of Housing Transformation.

Resources and Transformation



Vacant
Executive Director of Resources and Transformation.



Rachel Rosewell
Chief Finance Officer (S151).



Surjit Tour
City Solicitor and Monitoring Officer.



Sam Betts
Director of Human Resources and Organisational Development.



Steve Fry
Director of Customer and Digital Services.



Jacquie Russell
Director of Policy, Performance and Communications.

Salford Integrated Care Partnership (NHS GM)



Hannah Dobrowolska
Delivery Director for Health and Care Integration (Salford)



Elaine Vermeulen
Associate Director Finance



Harry Golby
Associate Director Delivery and Transformation.



Claire Vaughan
Associate Director Clinical and Care Professional Leadership.



Michelle Williamson
Associate Director Quality and Safety.



Stephen Young
Chief Executive

Children’s Services



Melissa Caslake
Executive Director of
Children’s Services.

Rebecca Bibby

Early help and school readiness, starting life well service, integrated youth support services, early intervention and prevention, Strengthening Families and Family Hubs..

Cathy Starbuck

Education, school improvement, SEND complex needs, virtual school for looked after children, school organisation.

Sayma Khan

Children’s social care, safeguarding and quality assurance, looked after children, integrated social work and prevention, youth offending service, social work and improvement, transformation..

Deborah Blackburn

Public health nursing and wellbeing, commissioning for public health, children’s services and 0-19 health services, integrated CAMHS commissioning, Partnerships/services to children and young people.

Place



John Searle
Executive Director
of Place.

Stephanie Mullenger

Strategic oversight and delivery of housing development (excluding homelessness), acquisition of key redevelopment sites, and disposal of surplus property assets. Responsible for the strategic management and optimisation of all council-owned property assets, including building surveying, property development, and facilities management.

Rupert Casey

Waste management, street cleansing, grounds maintenance, parks development, fleet maintenance and management, citywide school catering and building cleaning, commercial catering, bereavement, neighbourhood management, Regulatory Services, emergency planning, community safety, business continuity.

Jim Wensley

Regeneration and planning services, development, investment (public/private), project and programme management, planning and environmental policy.

Shoaib Mohammad

Infrastructure and sustainable travel, highways engineering design, landscape and structures, highways asset and network management, planning and building control, highways construction services.

Matthew Ainsworth

Skills, work and inclusive economy – labour market, adult careers and education, business support, growth and retention.

Darren Grice

City wide creative, culture, arts and heritage strategy leadership, development, and delivery; stakeholder engagement and partnerships; advocacy and fundraising.

Adult Social Care and Health Partnerships



Becky Wilkinson
Executive Director of
Adult Social Care and
Health Partnerships.

Elaina Quesada (Interim)
Director of Adult Social Services (DASS).

Gillian McLauchlan (Interim)
Director of Public Health and Wellbeing.

Judd Skelton

Integrated commissioning, suicide prevention, community mental health, mental health inpatients, mental health crisis care, Safeguarding Adults Board team.

Paul Walsh

Integrated commissioning, care homes, care at home, dementia, learning disabilities, carers.

Dr May Moonan

Public health intelligence and population health management, healthcare resources to reduce inequalities, improve health-related outcomes, health inequalities improvement, quality improvement, under-served and emerging communities. Deputy DPH.

Lee Calvert

Director of Adult Social Care (starts Spring 2026).

Vacant

Health protection, public health emergencies, infection prevention and control service, oral health prevention service, and commissioning for sexual health services, substance misuse services, tobacco quit services, physical activity services, weight management services, and wider determinants of health. Deputy DPH.

Alan Caddick (Interim)

Housing strategy and policy, assets and delivery, contract management, housing needs and homelessness, supported housing and housing transformations.

Resources and Transformation



Vacant
Executive Director
of Resources and
Transformation.

Rachel Rosewell

Statutory Section 151 officer responsible for Finance, Exchequer, Treasury Management, Procurement, Internal and Technical Audit and Insurance.

Surjit Tour

Legal and governance, monitoring officer, shared legal service, information governance, committee services, member services, electoral services (elections, electoral registration), local land charges, registration services (registrars: births, deaths, marriages, citizenship).

Sam Betts

Human Resources, Organisational Development, Strategic Business Partnering , Workforce Equality, Diversity, Inclusion & Belonging, Employee Relations, Employee Engagement, Employee Wellbeing, HR Operations (payroll, pensions and employee benefits), Recruitment, Retention and Talent Management, Workforce Development, Apprenticeships, Job Evaluation, Remuneration, Reward and Recognition.

Steve Fry

Customer and Digital Services, network and Infrastructure, ICT helpdesk, application support, digital services, cyber security, dev ops, council tax, housing benefits, business rates, print, post, admin, universal services, customer service - locality (gateways).

Jacquie Russell

Policy, performance and communications, business planning, complaints and risk management, key cities network, equalities, public relations, public affairs, marketing and campaigns, city mayor’s office.

Salford Integrated Care Partnership (NHS GM)



Hannah Dobrowolska
Delivery Director
for Health and Care
Integration (Salford)

Elaine Vermeulen

Finance, Business Intelligence, Contracting, Estates, Primary Care IT, Corporate governance.

Harry Golby

Service transformation and redesign, Healthcare provider system development, Performance management, System assurance, Emergency Planning.

Claire Vaughan

Clinical leadership and effectiveness, Medicines Optimisation, Quality Improvement, Workforce, HR and OD, Net Zero & Social Value, Engagement.

Michelle Williamson

Funded Nursing Care, Safeguarding Quality Assurance, Equality, diversity and inclusion, Patient services, Individualised commissioning.